

INCLINED PLATE CLARIFIERS (IPC)

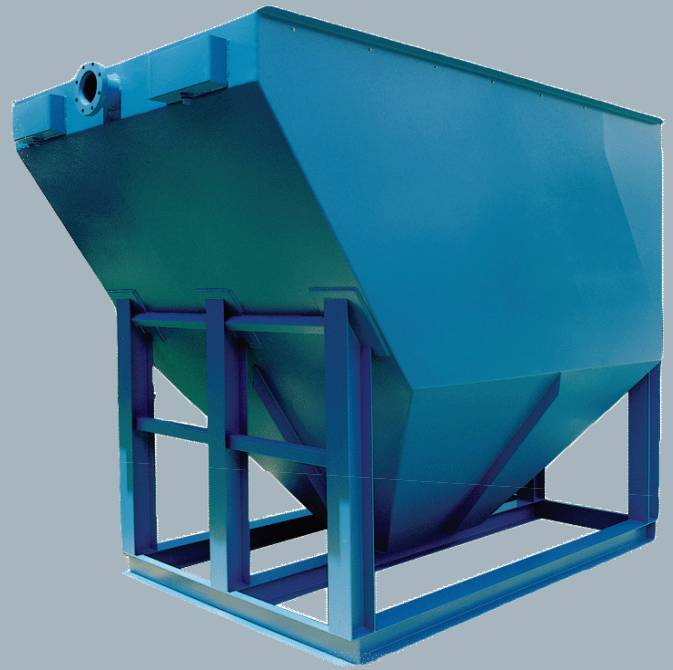
Inclined Plate Clarifiers (IPC) are a time proven method for removing settleable solids from wastewater streams. In many applications, an inclined plate clarifier is an economical way to reduce TSS, metals, BOD, and more from a waste stream prior to discharge or filtration. An inclined plate clarifier has a much smaller footprint than a conventional clarifier.

HOW IT WORKS

A waste stream with flocculated solids enters the center influent chamber. The liquid/solid solution is then directed through a chamber of inclined plates. The water travels through the space between the plates at a low velocity, which creates an even laminar flow. This causes the solids to slide down the plates into the below solids hopper. The liquid portion of the solution continues to rise to the top of the tank and is collected into a clean water chamber while the solids are removed from the bottom of the tank.

FEATURES & BENEFITS

- Footprint is only 20% that of a conventional clarifier
- 58 degree plate angle reduces potential for solids build up
- Plates are constructed of high quality polypropylene, which means excellent chemical and temperature resistance
- Individual plates instead of a plate pack make cleaning and removal more operator friendly
- Construction options include coated steel, stainless steel, or polypropylene
- EPS Wastewater can custom fabricate to any desired size
- Low profile design available for flows less than 55 GPM
- EPS Wastewater can provide the entire wastewater treatment system around the clarifier
- Flow ranges from 5 - 700 GPM



APPLICATIONS

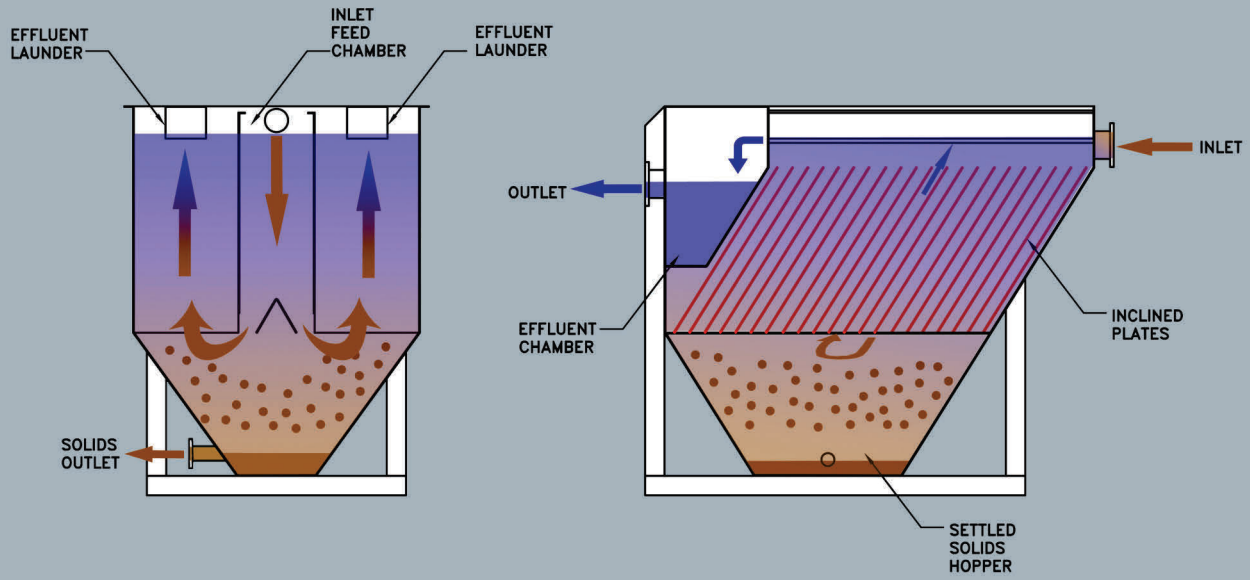
- Metal plating and finishing
- Metals manufacturing
- Automotive parts manufacturing
- Aluminum anodizing
- Steel pickling
- Parkerizing and phosphating
- Pigment and dye manufacturing
- Ground water remediation
- Produced water from oil and gas industry
- Mining
- Chemical processing



Our mission is to deliver wastewater treatment equipment and solutions that effectively and economically address the needs of our customers.

OUR FULL LINE OF TECHNOLOGIES INCLUDE:

- Inclined Plate Clarifiers (IPC)
- Multi-Media Filters (MMF)
- Ultrafilters (UF)
- pH Adjustment Systems
- Pump Skids
- Control Panels
- Dissolved Air Flotation (DAF)
- Oil / Water Separators (OWS)
- Batch Treatment Systems
- Skid Mounted Equipment
- Filter Presses
- Flash Mix and Flocculation



SIZING CHART

Model	Length	Width	Height	Hoppers	Number of plates	Settling area (ft ²)	Design flow rate (GPM)
IPC185	6' - 6"	7' - 10"	10'	1	26	185	45
IPC365	9' - 3"	7' - 10"	10'	1	52	365	90
IPC550	12' - 1"	7' - 10"	10'	1	78	550	135
IPC735	14' - 10"	7' - 10"	10'	2	104	735	185
IPC920	17' - 8"	7' - 10"	10'	2	130	920	230
IPC1100	20' - 5"	7' - 10"	10'	2	156	1100	275
IPC1285	23' - 3"	7' - 10"	10'	3	182	1285	320
IPC1470	26' - 0"	7' - 10"	10'	3	208	1470	365
IPC1655	28' - 6"	7' - 10"	10'	3	234	1655	410
IPC1835	31' - 3"	7' - 10"	10'	4	260	1835	460
IPC2020	34' - 5"	7' - 10"	10'	4	286	2020	505
IPC2205	37' - 2"	7' - 10"	10'	4	312	2205	550
IPC2390	40' - 0"	7' - 10"	10'	5	338	2390	595
IPC2570	42' - 9"	7' - 10"	10'	5	364	2570	645
IPC2755	45' - 7"	7' - 10"	10'	5	390	2755	690

